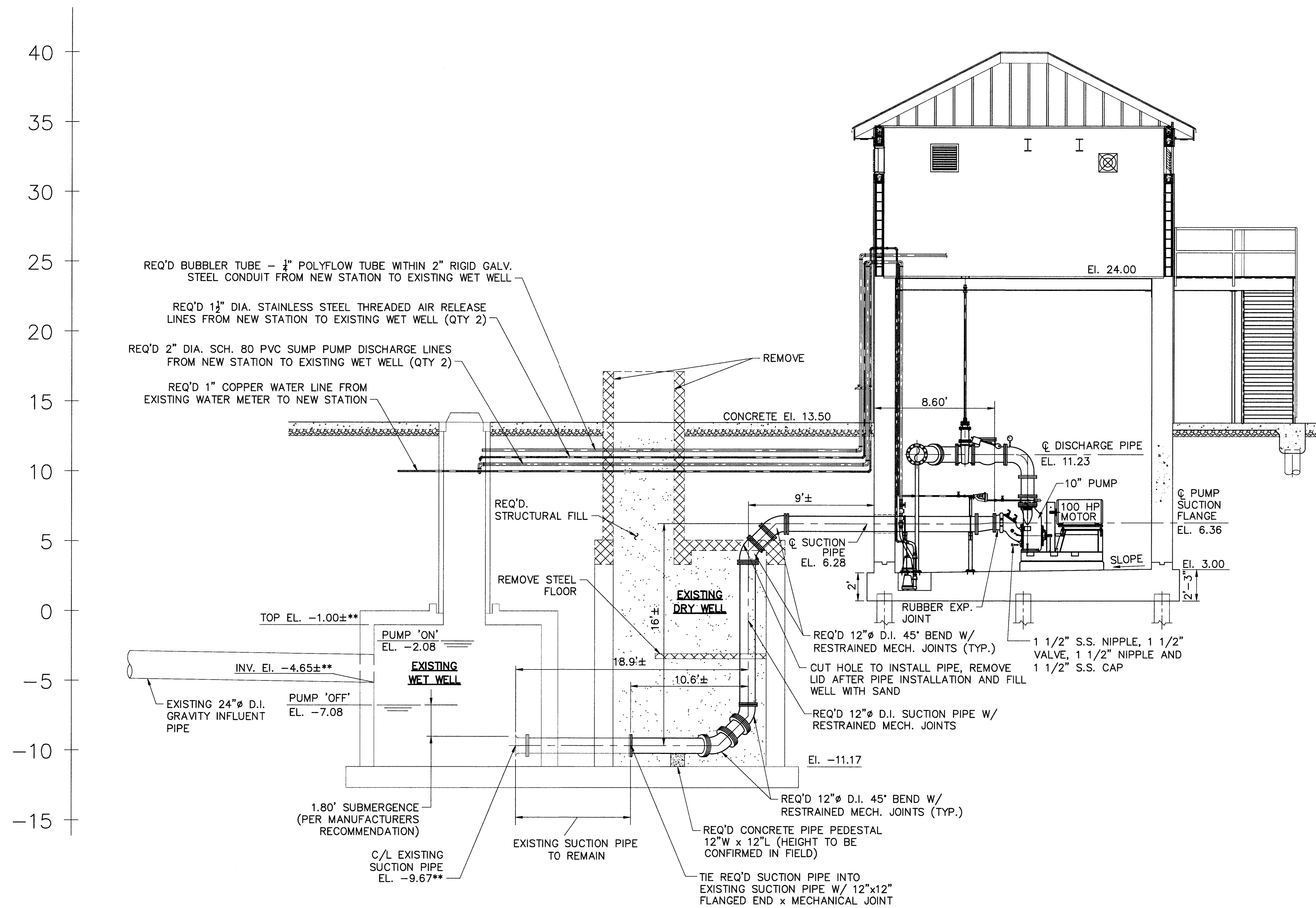


FOR REFERENCE
ONLY




** BASED ON SWBNO PROVIDED
AS-BUILT DRAWINGS,
TO BE VERIFIED IN FIELD

LAWRENCE

(A) PUMP STATION CROSS SECTION (LOOKING WEST)

SCALE: $1/4" = 1'-0"$

0 4' 8'



RECORD DRAWING
DATE: 2-10-17

RECORD DRAWINGS WERE PREPARED FROM INFORMATION PROVIDED BY THE PROGRAM
MANAGER, THE CONTRACTOR AND THE PROGRAM MANAGER'S ON-SITE PROJECT
REPRESENTATIVE, AND INFORMATION FROM APPROVED SHOP DRAWINGS.

JOHN HOLTGRENE, PE
DESIGN ENGINEERING, INC.

DESIGN ENGINEERING INC.
3330 West Esplanade Ave. S.
Suite 205
Metairie, LA 70002
(504) 836-2155

MECHANICAL			
REV.	DATE	DESCRIPTION	BY
SEWERAGE AND WATER BOARD OF NEW ORLEANS			
CONTRACT 3670 HURRICANE KATRINA RELATED 404 HAZARD MITIGATION GRANT PROGRAM REPLACEMENT OF LAWRENCE SEWAGE PUMPING STATION			
PIPING CROSS SECTION THROUGH STATION AND WET WELL			
DR. TH/BD	_____ GENERAL SUPERINTENDENT		
TIC: -----			
CR. DS/CW			
AP. JH			
SCALE: AS SHOWN			
DATE: DECEMBER 2011	SET NO.	SHEET NO. 26	
DWG. No. 12041-W-63			